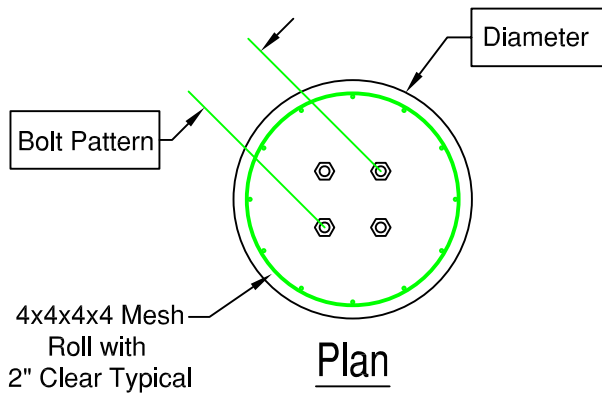
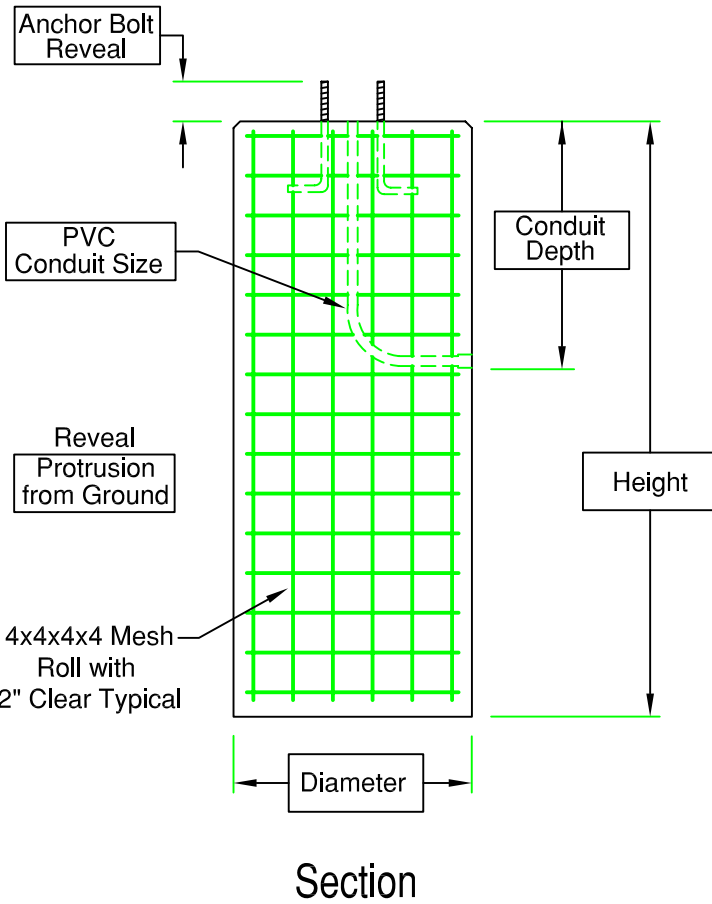


Round Light Pole Base (Information Sheet)



IMPORTANT INFORMATION

- The Contractor is required to supply the following:
 - Anchor Bolts
 - Conduit
 - Sweeps / Elbows
 - Couplings
- Conduit Orientation must be at 0, 90, 180 or 270 Deg.
- Concrete Minimum Strength 5000 PSI @ 28 Days
- Weights Subject to Variation



18" Dia.

Height	Weight
5'-0"	1,310 lbs
6'-0"	1,570 lbs
7'-0"	1,830 lbs
7'-6"	1,960 lbs

Standard Sizes Shown - Other Sizes Available

24" Dia.

Height	Weight
6'-0"	2,790 lbs
7'-0"	3,260 lbs
8'-0"	3,720 lbs
9'-0"	4,190 lbs

Standard Sizes Shown - Other Sizes Available

18" Dia. Configurations

# of Conduits	Max. Conduit Size	Sweeps or 45° Elbows
1-way	1"	Sweeps
2-way	1"	Sweeps
3-way	1"	45° Elbows
4-way	1"	45° Elbows

24" Dia. Configurations

# of Conduits	Max. Conduit Size	Sweeps or 45° Elbows
1-way	1"	Sweeps
1-way	2"	45° Elbows
2-way	1"	Sweeps
2-way	2"	45° Elbows
3-way	1"	Sweeps
3-way	1 1/2"	45° Elbows
4-way	1"	Sweeps
4-way	1 1/2"	45° Elbows



PRECAST CONCRETE PRODUCTS

78 PRECAST ROAD MILTON, VT 05468 • 802.893.2401
TOLL FREE 1.888.299.2401 FAX 802.893.1542