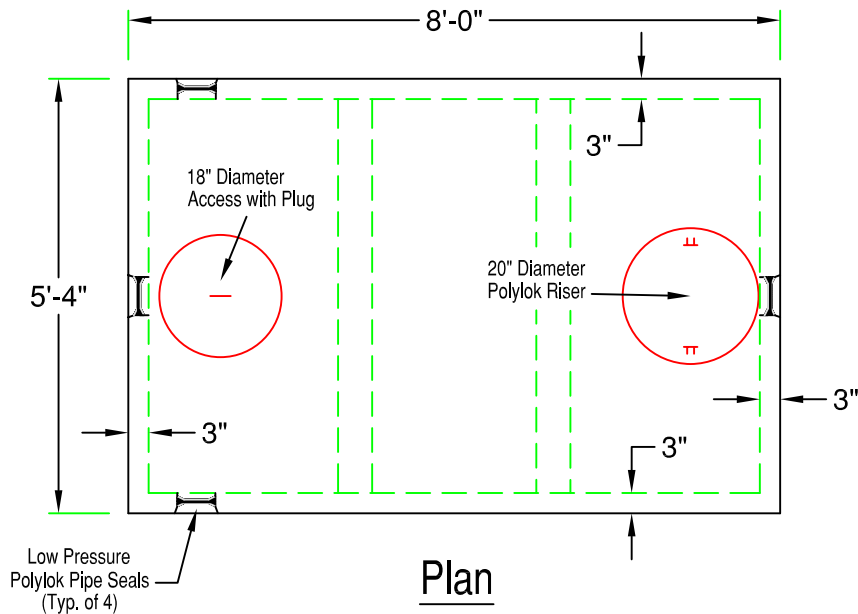
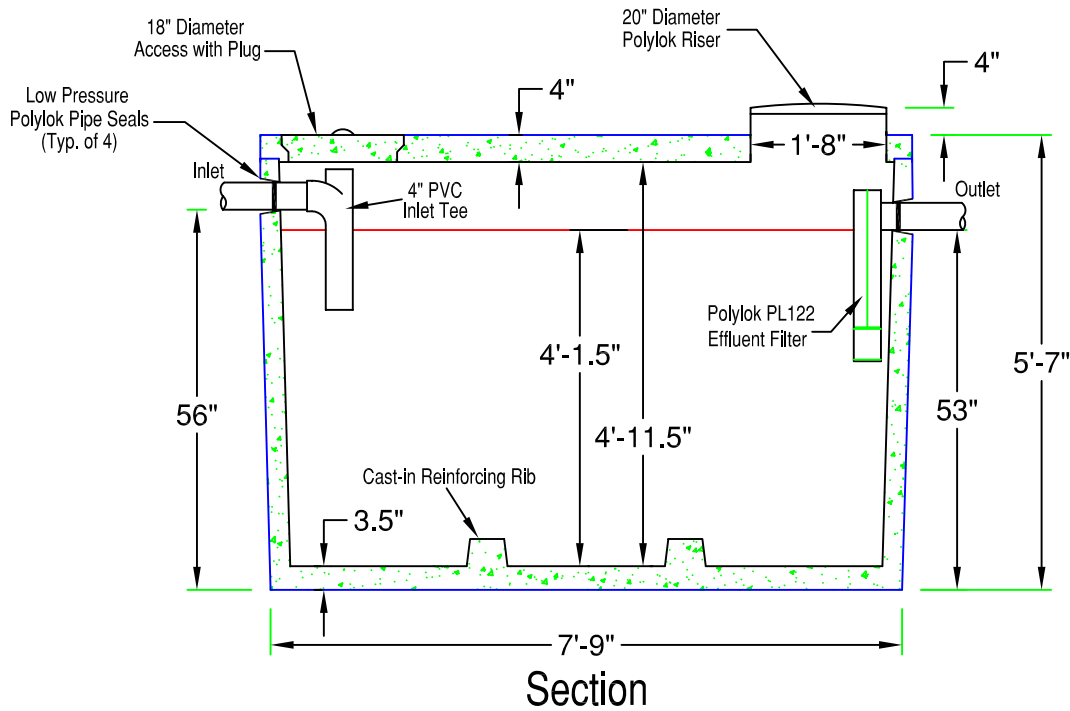


1000 Gallon Standard Septic Tank (1000STL)

Total Weight : 8,700 lbs



Note:
Recommended for
Areas w/ No or Low
Ground Water



SPECIFICATIONS:

- Concrete Minimum Strength 5000psi @ 28 days
- Steel Reinforcement Grade 60
- Polylok Pipe Seals
- Top Seam Construction
- Water Tight to Outlet Level
- Superior Performance Orenco Effluent Filters Available
- Effluent Filter Alarm Available
- Weights Subject to Variation



PRECAST CONCRETE PRODUCTS
78 PRECAST ROAD MILTON, VT 05468 +802.893.2401
TOLL FREE 1.888.299.2401 FAX 802.893.1542