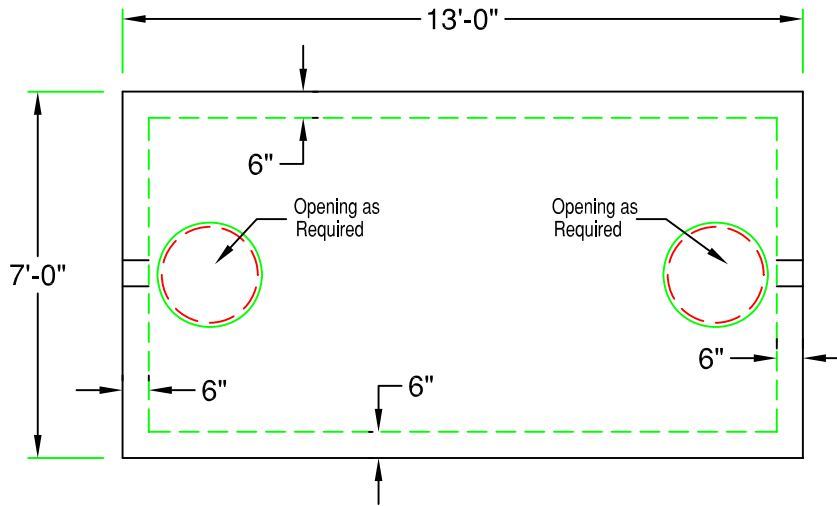


6' x 12' Heavy Duty Septic Tank

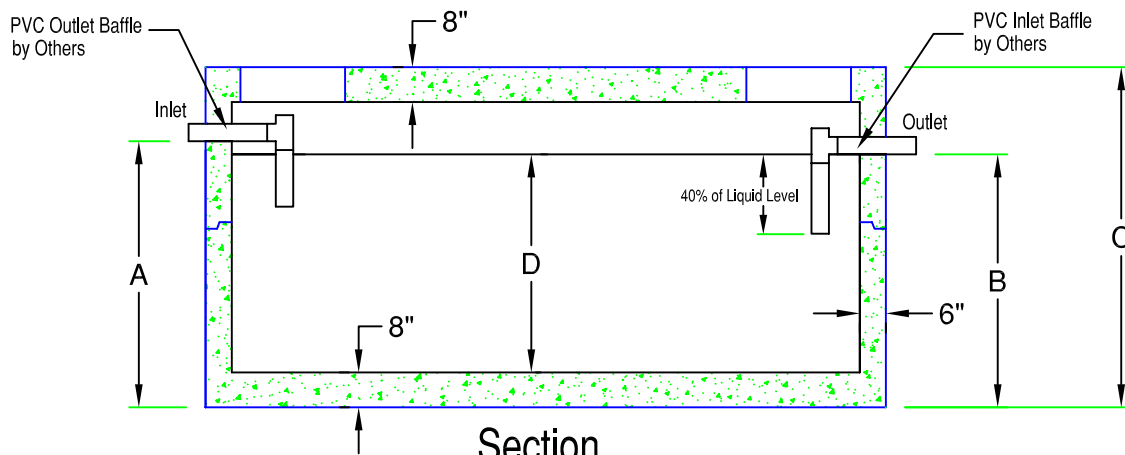
1,000 - 3,500 Gallon (HD6-12)

538 Gal. / Vertical ft.



Note:
Struts for Structural Integrity may be Required on Larger Sizes

Plan



Section

	Model	Tank Capacity	Inlet (A)	Outlet (B)	Height (C)	Liquid (D)	Weight
*	HD6-12-1000	1000 gallon	34"	31"	53"	23"	26,360 lb
*	HD6-12-1500	1500 gallon	44"	41"	60"	33"	29,200 lb
	HD6-12-2000	2000 gallon	56"	53"	76"	45"	32,000 lb
	HD6-12-2500	2500 gallon	67"	64"	84"	56"	33,400 lb
	HD6-12-3000	3000 gallon	78"	75"	96"	67"	36,200 lb
	HD6-12-3500	3500 gallon	89"	86"	105"	78"	39,040 lb

SPECIFICATIONS:

- Concrete Minimum Strength 5000psi @ 28 days
- Steel Reinforcement Grade 60
- Joints Sealed with Butyl Sealant
- Inlet and Outlet Baffles by Others
- H-20 Loading Available
- (*) Top Seam Construction
- Weights Subject to Variation



PRECAST CONCRETE PRODUCTS
78 PRECAST ROAD MILTON, VT 05468 •802.893.2401
TOLL FREE 1.888.299.2401 FAX 802.893.1542