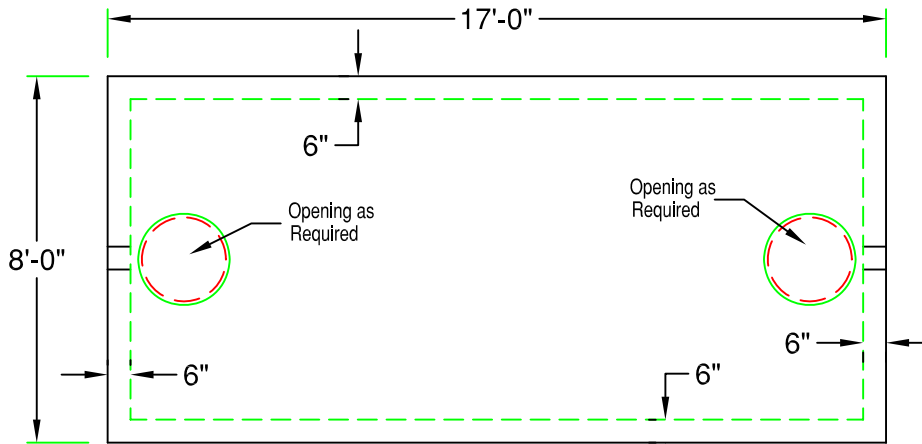


7' x 16' Heavy Duty Septic Tank

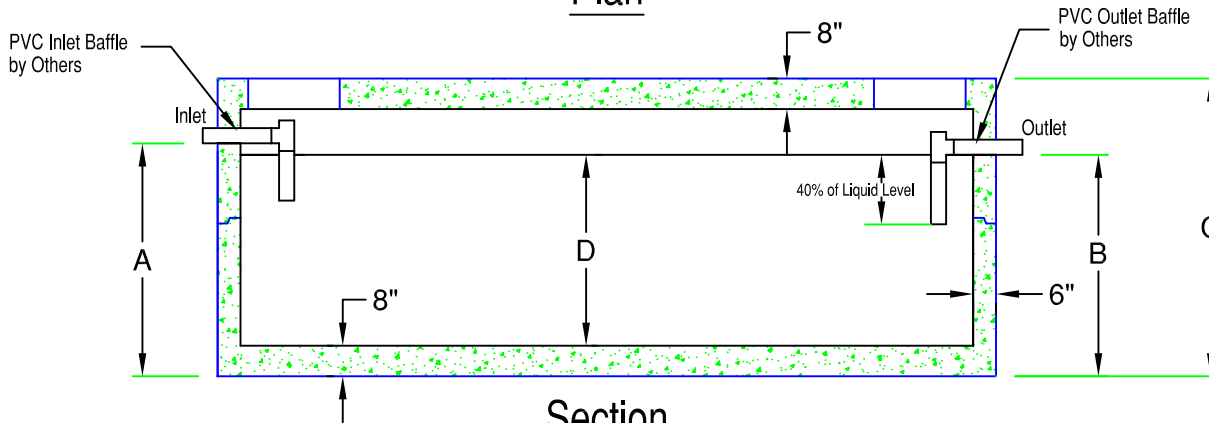
4,000 - 9,000 Gallon (HD7-16)

838 Gal. / Vertical ft.



Note:
Struts for Structural Integrity may be Required on Larger Sizes

Plan



Section

Model	Tank Capacity	Inlet (A)	Outlet (B)	Height (C)	Liquid (D)	Weight
HD7-16-4000	4000 gallon	71"	68"	88"	60"	48,000 lb
HD7-16-4500	4500 gallon	77"	74"	94"	66"	50,000 lb
HD7-16-5000	5000 gallon	83"	80"	100"	72"	52,000 lb
HD7-16-5500	5500 gallon	95"	92"	112"	84"	55,600 lb
HD7-16-6000	6000 gallon	101"	98"	118"	90"	57,200 lb
HD7-16-6500	6500 gallon	107"	104"	124"	96"	58,800 lb
HD7-16-7000	7000 gallon	113"	110"	130"	102"	60,800 lb
HD7-16-7500	7500 gallon	119"	116"	136"	108"	62,400 lb
HD7-16-8000	8000 gallon	131"	128"	142"	120"	66,000 lb
HD7-16-8500	8500 gallon	137"	134"	148"	126"	67,200 lb
HD7-16-9000	9000 gallon	143"	140"	160"	132"	69,600 lb

SPECIFICATIONS:

- Concrete Minimum Strength 5000psi @ 28 days
- Steel Reinforcement Grade 60
- Joints Sealed with Butyl Sealant
- Inlet and Outlet Baffles by Others
- H-20 Loading Available
- Weights Subject to Variation



PRECAST CONCRETE PRODUCTS

78 PRECAST ROAD MILTON, VT 05468 •802.893.2401
TOLL FREE 1.888.299.2401 FAX 802.893.1542