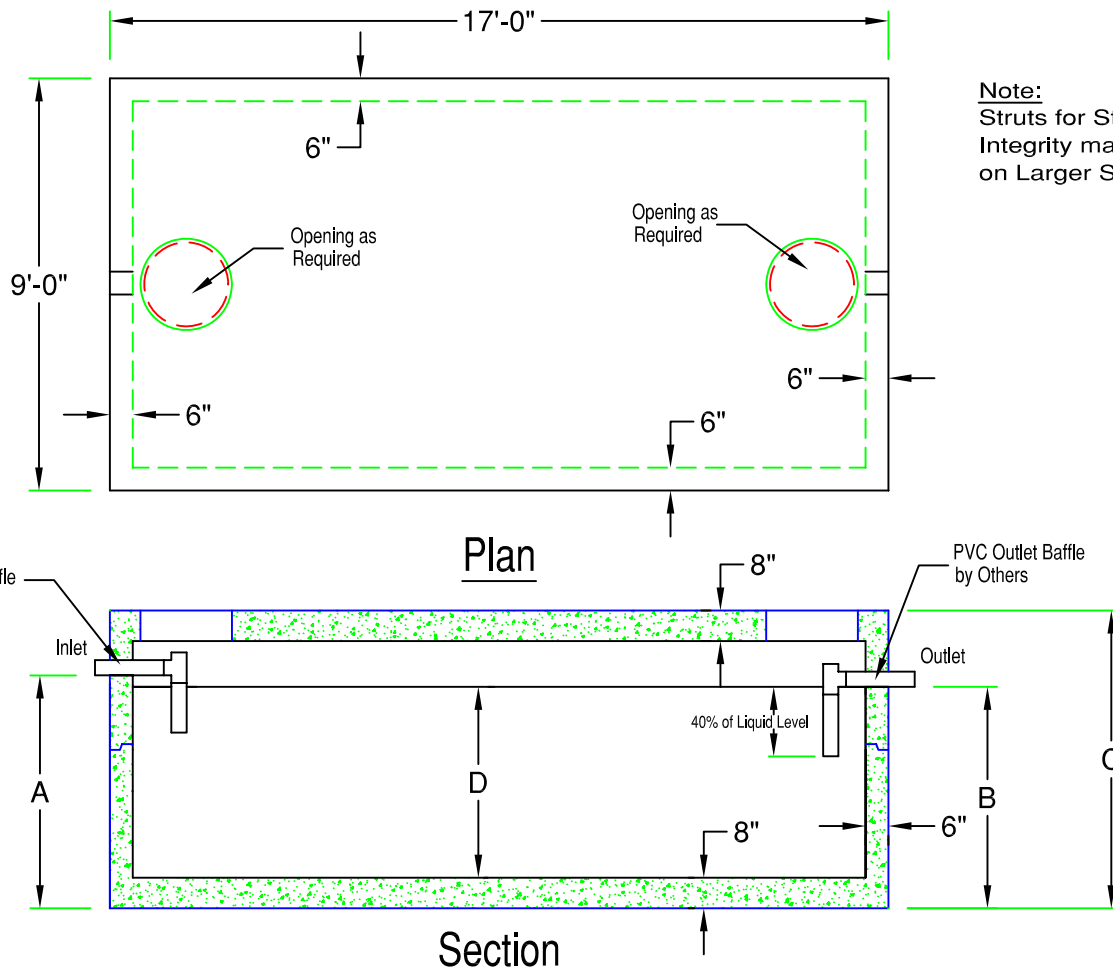


8' x 16' Heavy Duty Septic Tank

4,000 - 10,500 Gallon (HD8-16)

957 Gal. / Vertical ft.

Note:
Struts for Structural Integrity may be Required on Larger Sizes



Model	Tank Capacity	Inlet (A)	Outlet (B)	Height (C)	Liquid (D)	Weight
HD8-16-4000	4000 gallon	63"	60"	82"	52"	50,600 lb
HD8-16-4500	4500 gallon	68"	65"	88"	57"	52,450 lb
HD8-16-5000	5000 gallon	74"	71"	94"	63"	54,300 lb
HD8-16-5500	5500 gallon	80"	77"	100"	69"	56,150 lb
HD8-16-6000	6000 gallon	88"	85"	106"	77"	58,000 lb
HD8-16-6500	6500 gallon	93"	90"	112"	82"	59,860 lb
HD8-16-7000	7000 gallon	99"	96"	118"	88"	61,710 lb
HD8-16-7500	7500 gallon	105"	102"	124"	94"	63,560 lb
HD8-16-8000	8000 gallon	112"	109"	130"	101"	65,410 lb
HD8-16-8500	8500 gallon	118"	115"	136"	107"	67,260 lb
HD8-16-9000	9000 gallon	124"	121"	142"	113"	69,120 lb
HD8-16-9500	9500 gallon	131"	128"	148"	120"	70,970 lb
HD8-16-10000	10000 gallon	137"	134"	154"	126"	72,820 lb
HD8-16-10500	10500 gallon	143"	140"	160"	132"	74,670 lb

SPECIFICATIONS:

- Concrete Minimum Strength 5000psi @ 28 days
- Steel Reinforcement Grade 60
- Joints Sealed with Butyl Sealant
- Inlet and Outlet Baffles by Others
- H-20 Loading Available
- Weights Subject to Variation



PRECAST CONCRETE PRODUCTS

78 PRECAST ROAD MILTON, VT 05468 •802.893.2401
TOLL FREE 1.888.299.2401 FAX 802.893.1542