

72" Diameter Manhole

211 Gal. / Vertical ft.

FLAT TOP SECTION

Height	Item #	Weight
1'-2"	MH72-14FT	4,140 lb

Standard Heights Shown - Other Heights Available

RISER SECTION

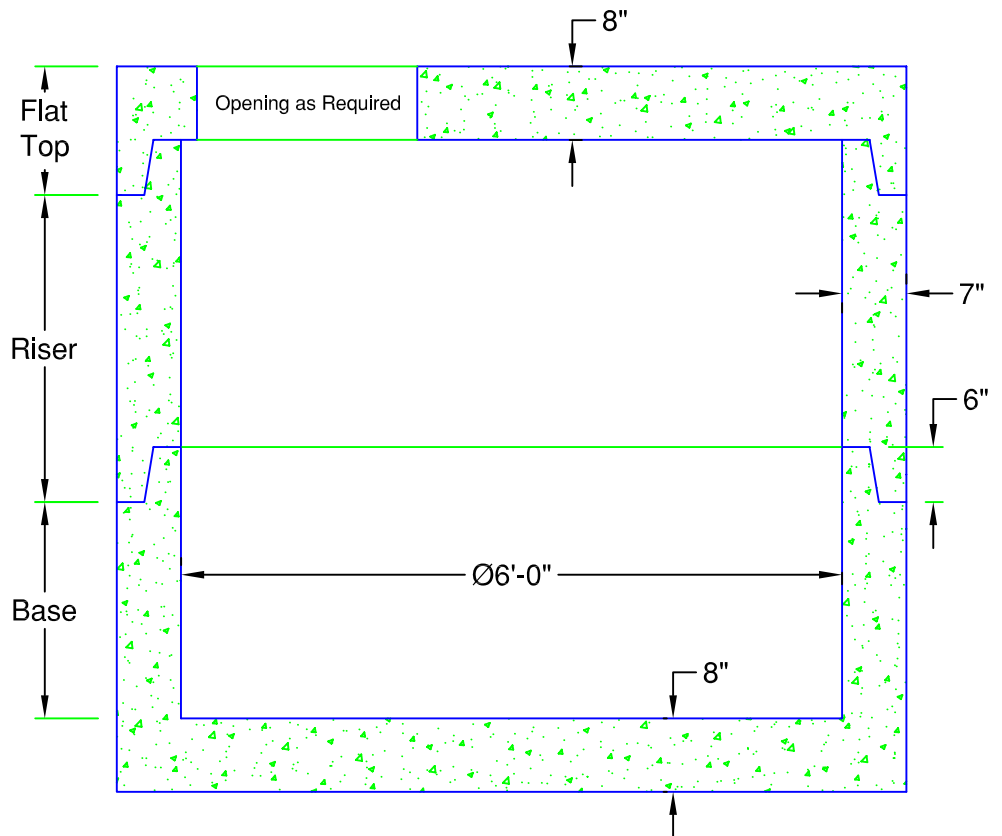
Height	Item #	Weight
1'-0"	MH72-12R	1,800 lb
2'-0"	MH72-24R	3,590 lb
3'-0"	MH72-36R	5,380 lb
4'-0"	MH72-48R	7,170 lb
5'-0"	MH72-60R	8,960 lb
6'-0"	MH72-72R	10,750 lb
7'-0"	MH72-84R	12,540 lb
8'-0"	MH72-96R	14,330 lb

Standard Heights Shown - Other Heights Available

BASE SECTION

Height	Item #	Weight
2'-0"	MH72-24B	7,590 lb
3'-0"	MH72-36B	9,380 lb
4'-0"	MH72-48B	11,170 lb
5'-0"	MH72-60B	12,960 lb
6'-0"	MH72-72B	14,750 lb
7'-0"	MH72-84B	16,540 lb

Standard Heights Shown - Other Heights Available



Section

SPECIFICATIONS:

- Concrete Minimum Strength 5000psi @ 28 days
- H-20 Loading
- Joints sealed with Butyl sealant
- Monolithic Construction
- Meets ASTM C478
- Weights Subject to Variation



PRECAST CONCRETE PRODUCTS
 78 PRECAST ROAD MILTON, VT 05468 +802.893.2401
 TOLL FREE 1.888.299.2401 FAX 802.893.1542