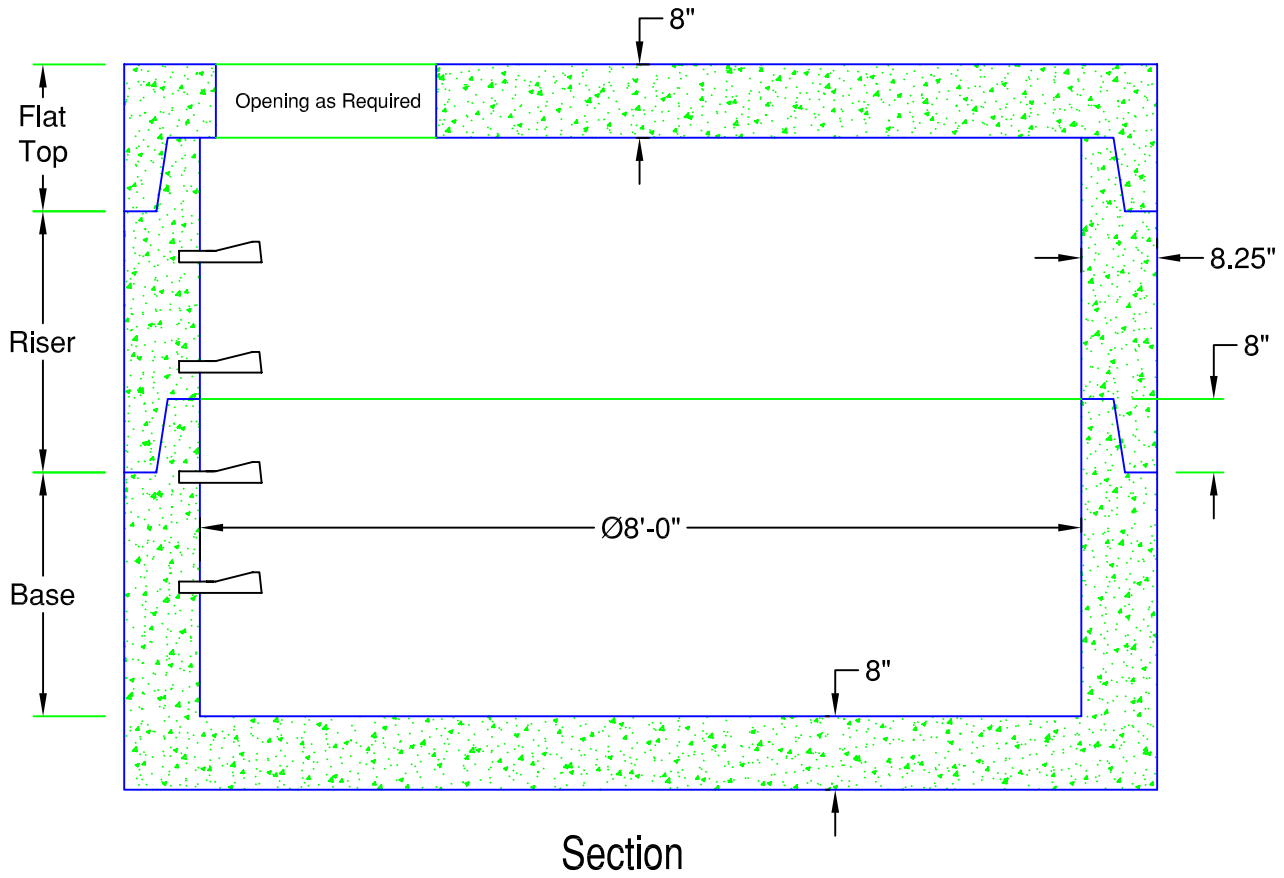


# 96" Diameter Manhole

375 Gal. / Vertical ft.



## FLAT TOP SECTION

Height	Item #	Weight
1'-4"	MH96-16FT	7,800 lb

Standard Heights Shown - Other Heights Available

## RISER SECTION

Height	Item #	Weight
2'-0"	MH96-24R	5,550 lb
3'-0"	MH96-36R	8,330 lb
4'-0"	MH96-48R	11,100 lb
5'-0"	MH96-60R	13,880 lb
6'-0"	MH96-72R	16,650 lb
7'-0"	MH96-84R	19,430 lb
8'-0"	MH96-96R	22,200 lb

Standard Heights Shown - Other Heights Available

## BASE SECTION

Height	Item #	Weight
2'-0"	MH96-24B	12,400 lb
3'-0"	MH96-36B	15,170 lb
4'-0"	MH96-48B	17,950 lb
5'-0"	MH96-60B	20,720 lb
6'-0"	MH96-72B	23,500 lb
7'-0"	MH96-84B	26,270 lb

Standard Heights Shown - Other Heights Available

## SPECIFICATIONS:

- Concrete Minimum Strength 5000psi @ 28 days
- H-20 Loading
- Joints sealed with Butyl sealant
- Monolithic Construction
- Meets ASTM C478
- Weights Subject to Variation



PRECAST CONCRETE PRODUCTS

78 PRECAST ROAD MILTON, VT 05468 •802.893.2401  
TOLL FREE 1.888.299.2401 FAX 802.893.1542