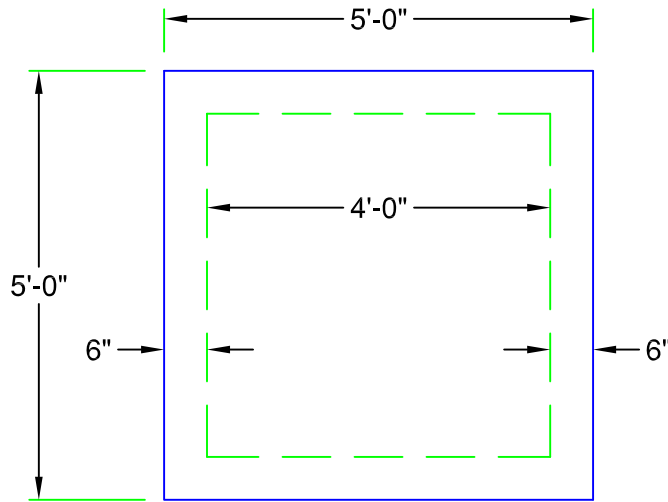


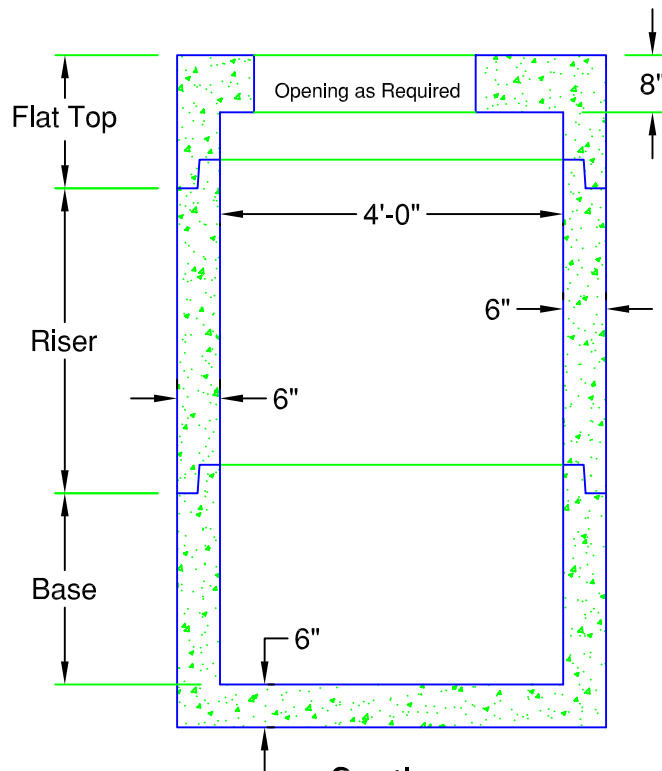
# Precast Square Structure

## 48" Square (48SQ)

119 Gal. / Vertical ft.



Plan



Section

### BASE SECTION

Height	Item #	Weight
1'-0"	SQ48B-12	3,410 lb
2'-0"	SQ48B-24	4,740 lb
3'-0"	SQ48B-36	6,070 lb
4'-0"	SQ48B-48	7,400 lb
5'-0"	SQ48B-60	8,740 lb
6'-0"	SQ48B-72	10,070 lb

Standard Heights Shown - Other Heights Available

### RISER SECTION

Height	Item #	Weight
2'-0"	SQ48R-24	2,670 lb
3'-0"	SQ48R-36	4,000 lb
4'-0"	SQ48R-48	5,340 lb
5'-0"	SQ48R-60	6,670 lb
6'-0"	SQ48R-72	8,000 lb

Standard Heights Shown - Other Heights Available

### FLAT TOP SECTION

Height	Item #	Weight
12"	SQ48C-12	2,700 lb

Standard Heights Shown - Other Heights Available

### SPECIFICATIONS:

- Concrete Minimum Strength 5000psi @ 28 days
- Steel Reinforcement grade 60
- Joints sealed with Butyl sealant
- Monolithic Construction
- H-20 Design Available
- Pipe Penetrations Supplied per Specifications
- Weights Subject to Variation



PRECAST CONCRETE PRODUCTS

78 PRECAST ROAD MILTON, VT 05468 +802.893.2401  
TOLL FREE 1.888.299.2401 FAX 802.893.1542