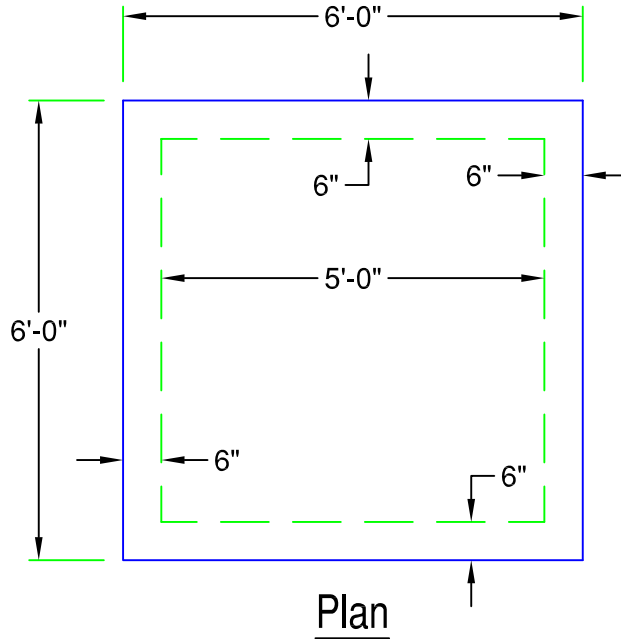


# Precast Square Structure

## 60" Square (60SQ)

187 Gal. / Vertical ft.



### BASE SECTION

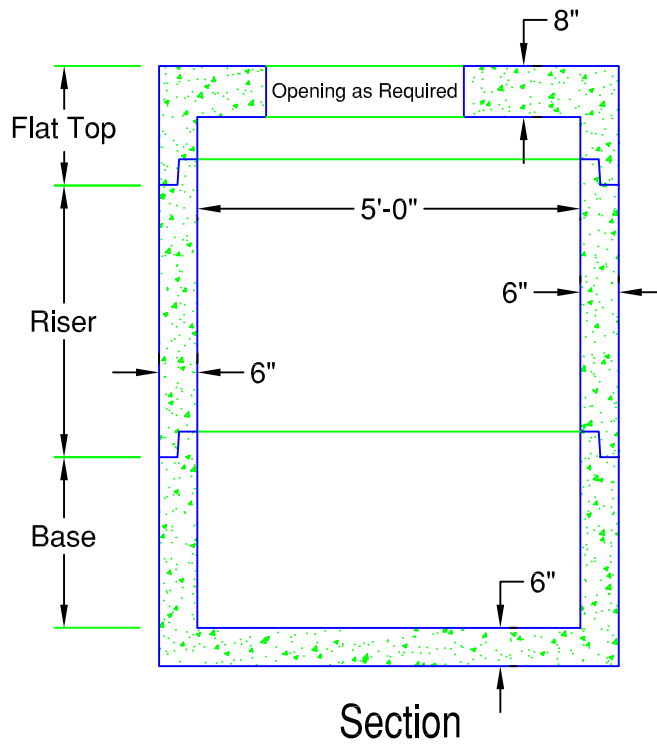
Height	Item #	Weight
1'-0"	SQ60B-12	4,570 lb
2'-0"	SQ60B-24	6,200 lb
3'-0"	SQ60B-36	7,820 lb
3'-8"	SQ60B-44	8,910 lb

Standard Heights Shown - Other Heights Available

### RISER SECTION

Height	Item #	Weight
2'-0"	SQ60R-24	3,260 lb
3'-0"	SQ60R-36	4,890 lb
4'-0"	SQ60R-48	6,520 lb

Standard Heights Shown - Other Heights Available



### FLAT TOP SECTION

Height	Item #	Weight
12"	SQ60C-12	3,840 lb

Standard Heights Shown - Other Heights Available

### SPECIFICATIONS:

- Concrete Minimum Strength 5000psi @ 28 days
- Steel Reinforcement grade 60
- Joints sealed with Butyl sealant
- Monolithic Construction
- H-20 Design Available
- Pipe Penetrations Supplied per Specifications
- Weights Subject to Variation



PRECAST CONCRETE PRODUCTS

78 PRECAST ROAD MILTON, VT 05468 +802.893.2401  
TOLL FREE 1.888.299.2401 FAX 802.893.1542