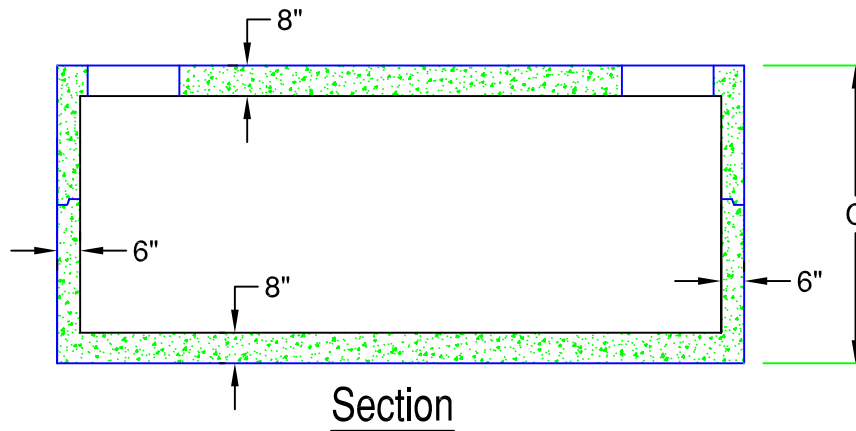
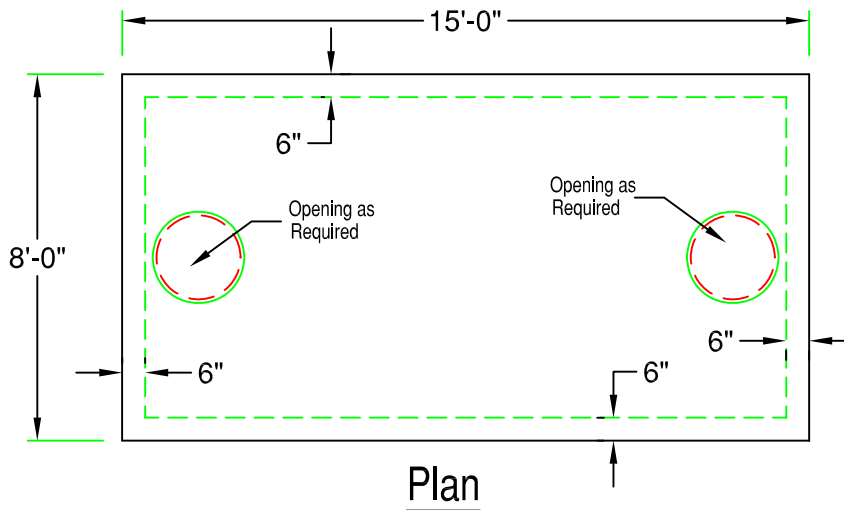


7' x 14' Heavy Duty Vault

3,000 - 8,000 Gallon (HD7-14)

733 Gal. / Vertical ft.



Model	Tank Capacity	Height (C)	Weight
HD7-14-3000	3000 gallon	82"	41,710 lb
HD7-14-3500	3500 gallon	88"	43,340 lb
HD7-14-4000	4000 gallon	94"	44,970 lb
HD7-14-4500	4500 gallon	100"	46,590 lb
HD7-14-5000	5000 gallon	112"	49,850 lb
HD7-14-5500	5500 gallon	118"	51,480 lb
HD7-14-6000	6000 gallon	124"	53,110 lb
HD7-14-6500	6500 gallon	136"	56,360 lb
HD7-14-7000	7000 gallon	142"	57,990 lb
HD7-14-7500	7500 gallon	154"	61,250 lb
HD7-14-8000	8000 gallon	160"	62,870 lb

SPECIFICATIONS:

- Concrete Minimum Strength 5000psi @ 28 days
- Steel Reinforcement Grade 60
- Joints Sealed with Butyl Sealant
- H-20 Loading Available
- Pipe Penetrations Supplied per Specifications
- Weights Subject to Variation



PRECAST CONCRETE PRODUCTS
 78 PRECAST ROAD MILTON, VT 05468 •802.893.2401
 TOLL FREE 1.888.299.2401 FAX 802.893.1542