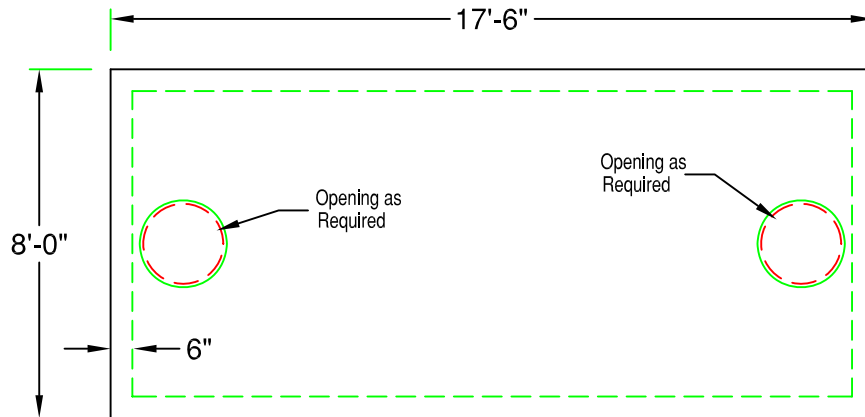


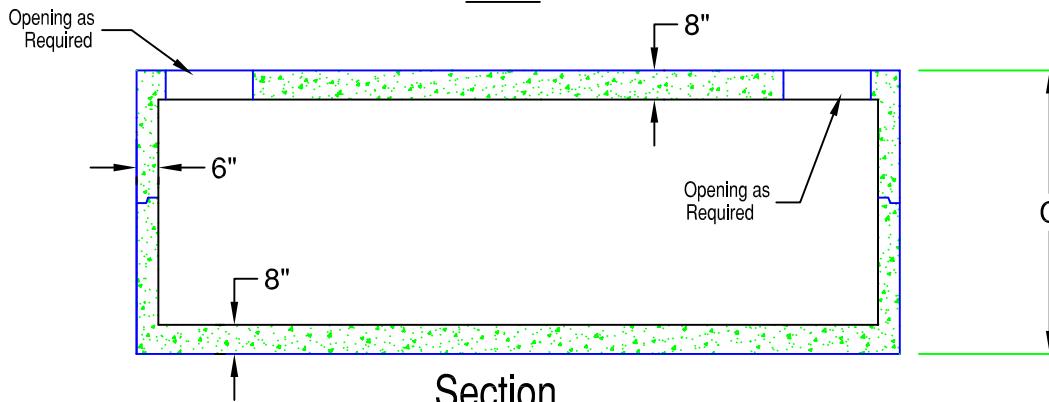
7.5' x 16' Heavy Duty Vault

4,000 - 10,000 Gallon (HD7.5-16)

898 Gal. / Vertical ft.



Plan



Section

Model	Tank Capacity	Height (C)	Weight
HD7.5-16-4000	4000 gallon	82"	46,700 lb
HD7.5-16-4500	4500 gallon	88"	48,700 lb
HD7.5-16-5000	5000 gallon	94"	50,500 lb
HD7.5-16-5500	5500 gallon	100"	52,500 lb
HD7.5-16-6000	6000 gallon	106"	54,600 lb
HD7.5-16-6500	6500 gallon	118"	56,400 lb
HD7.5-16-7000	7000 gallon	124"	58,500 lb
HD7.5-16-7500	7500 gallon	130"	60,600 lb
HD7.5-16-8000	8000 gallon	136"	62,400 lb
HD7.5-16-8500	8500 gallon	142"	64,400 lb
HD7.5-16-9000	9000 gallon	148"	66,500 lb
HD7.5-16-9500	9500 gallon	154"	68,300 lb
HD7.5-16-10000	10000 gallon	160"	70,300 lb

SPECIFICATIONS:

- Concrete Minimum Strength 5000psi @ 28 days
- Steel Reinforcement Grade 60
- Joints Sealed with Butyl Sealant
- H2O Loading Available
- Pipe Penetrations Supplied per Specifications
- Weights Subject to Variation



PRECAST CONCRETE PRODUCTS
 78 PRECAST ROAD MILTON, VT 05468 •802.893.2401
 TOLL FREE 1.888.299.2401 FAX 802.893.1542