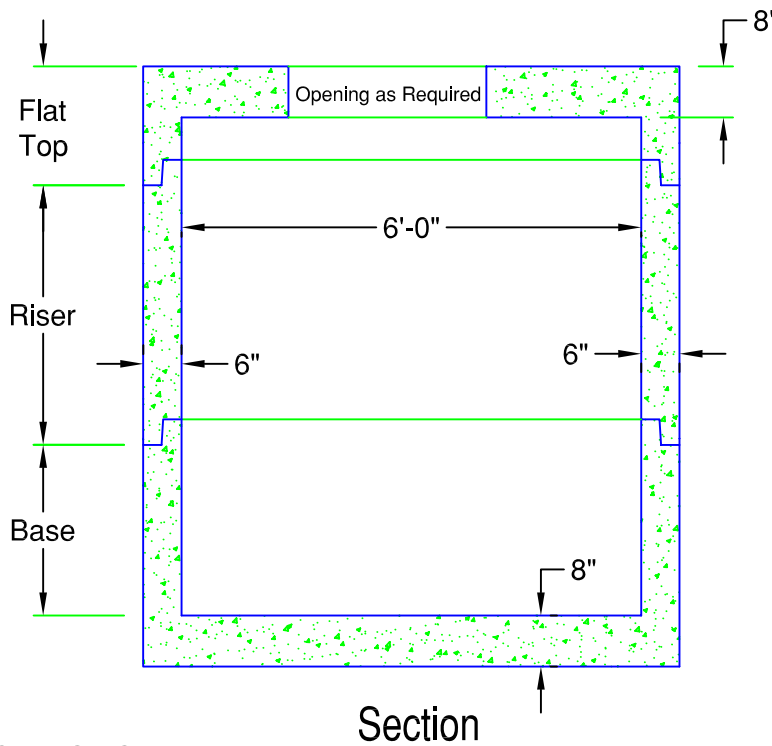
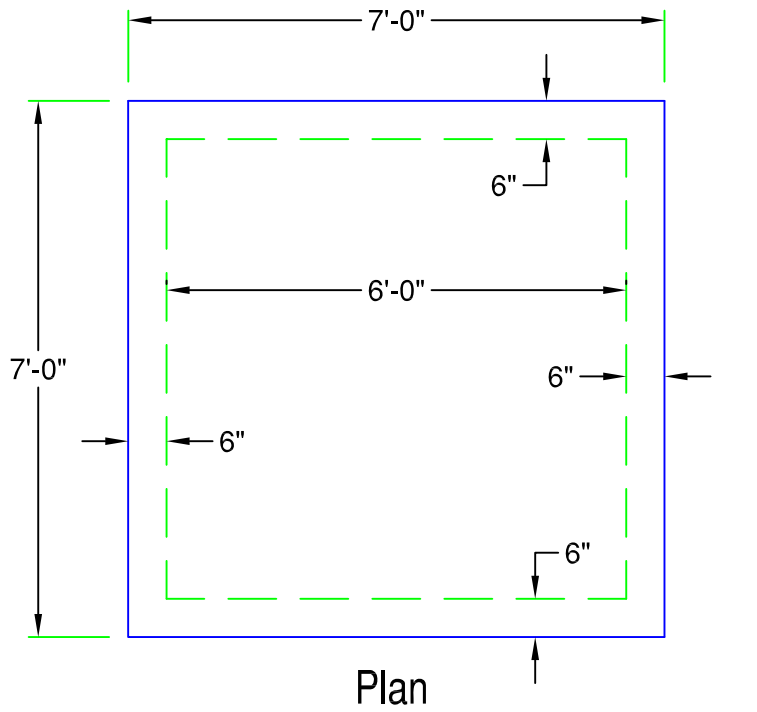


# Precast Square Structure

## 72" Square (72SQ)

269 Gal. / Vertical ft.



### BASE SECTION

| Height | Item #   | Weight    |
|--------|----------|-----------|
| 1'-0"  | SQ72B-12 | 6,790 lb  |
| 2'-0"  | SQ72B-24 | 8,710 lb  |
| 3'-0"  | SQ72B-36 | 10,640 lb |
| 4'-0"  | SQ72B-48 | 12,560 lb |
| 5'-0"  | SQ72B-60 | 14,480 lb |
| 6'-0"  | SQ72B-72 | 16,410 lb |
| 7'-0"  | SQ72B-84 | 18,330 lb |

Standard Heights Shown - Other Heights Available

### RISER SECTION

| Height | Item #   | Weight    |
|--------|----------|-----------|
| 2'-0"  | SQ72R-24 | 3,850 lb  |
| 3'-0"  | SQ72R-36 | 5,780 lb  |
| 4'-0"  | SQ72R-48 | 7,700 lb  |
| 5'-0"  | SQ72R-60 | 9,620 lb  |
| 6'-0"  | SQ72R-72 | 11,550 lb |
| 7'-0"  | SQ72R-84 | 13,470 lb |

Standard Heights Shown - Other Heights Available

### FLAT TOP SECTION

| Height | Item #   | Weight   |
|--------|----------|----------|
| 12"    | SQ72C-12 | 5,180 lb |

Standard Heights Shown - Other Heights Available

### SPECIFICATIONS:

- Concrete Minimum Strength 5000psi @ 28 days
- Steel Reinforcement grade 60
- Joints sealed with Butyl sealant
- Monolithic Construction
- H-20 Design Available
- Pipe Penetrations Supplied per Specifications
- Weights Subject to Variation



PRECAST CONCRETE PRODUCTS

78 PRECAST ROAD MILTON, VT 05468 +802.893.2401  
TOLL FREE 1.888.299.2401 FAX 802.893.1542