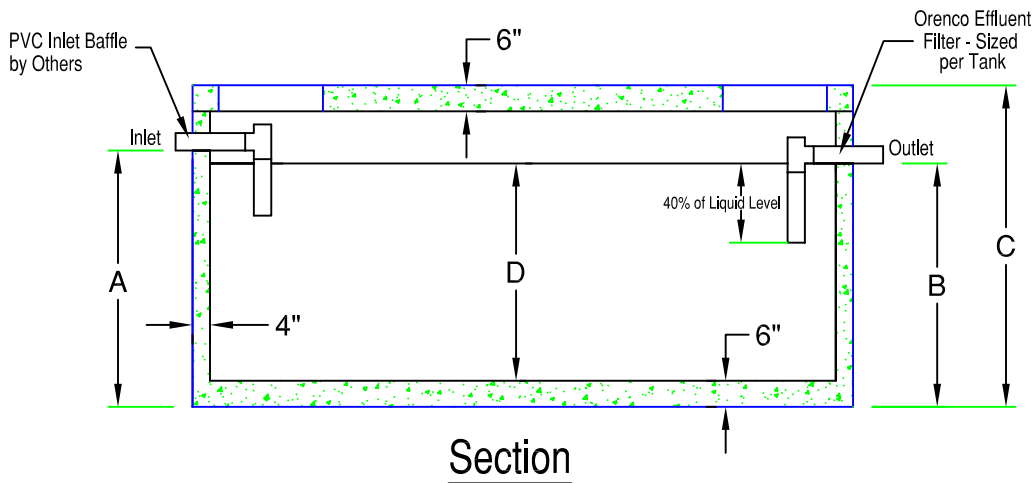
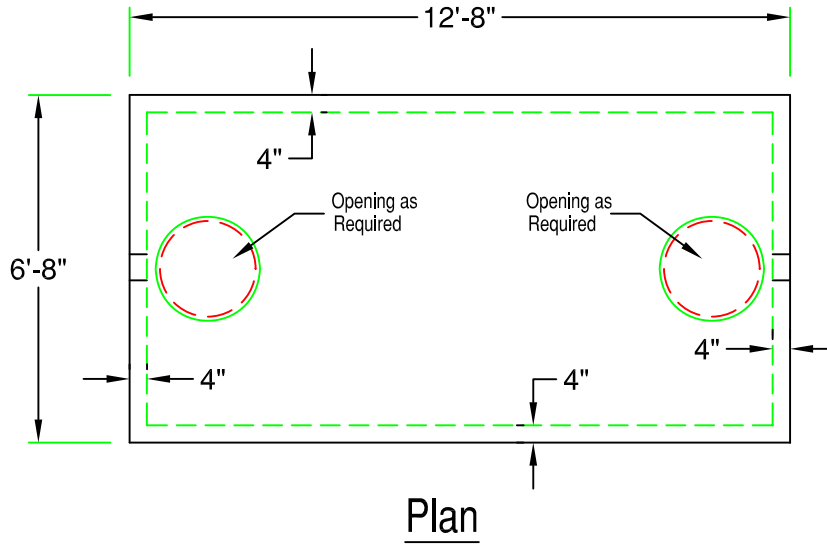


# 6' x 12' Septic Tank

1,000 - 3,500 Gallon (LD6-12)



Model	Tank Capacity	Inlet (A)	Outlet (B)	Height (C)	Liquid (D)	Weight
* LD6-12-1000	1000 gallon	32"	29"	49"	23"	22,270 lb
* LD6-12-1500	1500 gallon	43"	40"	57"	34"	24,420 lb
LD6-12-2000	2000 gallon	54"	51"	72"	45"	27,650 lb
LD6-12-2500	2500 gallon	65"	62"	80"	56"	29,800 lb
LD6-12-3000	3000 gallon	76"	73"	92"	67"	32,415 lb
LD6-12-3500	3500 gallon	84"	81"	101"	78"	34,872 lb

## SPECIFICATIONS:

- Concrete Minimum Strength 5000psi @ 28 days
- Steel Reinforcement Grade 60
- Joints Sealed with Butyl Sealant
- Inlet and Outlet Baffles by Others
- (\*) Top Seam Construction
- Water Tight to Outlet Level
- Superior Performance Orenco Effluent Filters Available
- Effluent Filter Alarm Available
- Weights Subject to Variation



**PRECAST CONCRETE PRODUCTS**  
 78 PRECAST ROAD MILTON, VT 05468 •802.893.2401  
 TOLL FREE 1.888.299.2401 FAX 802.893.1542