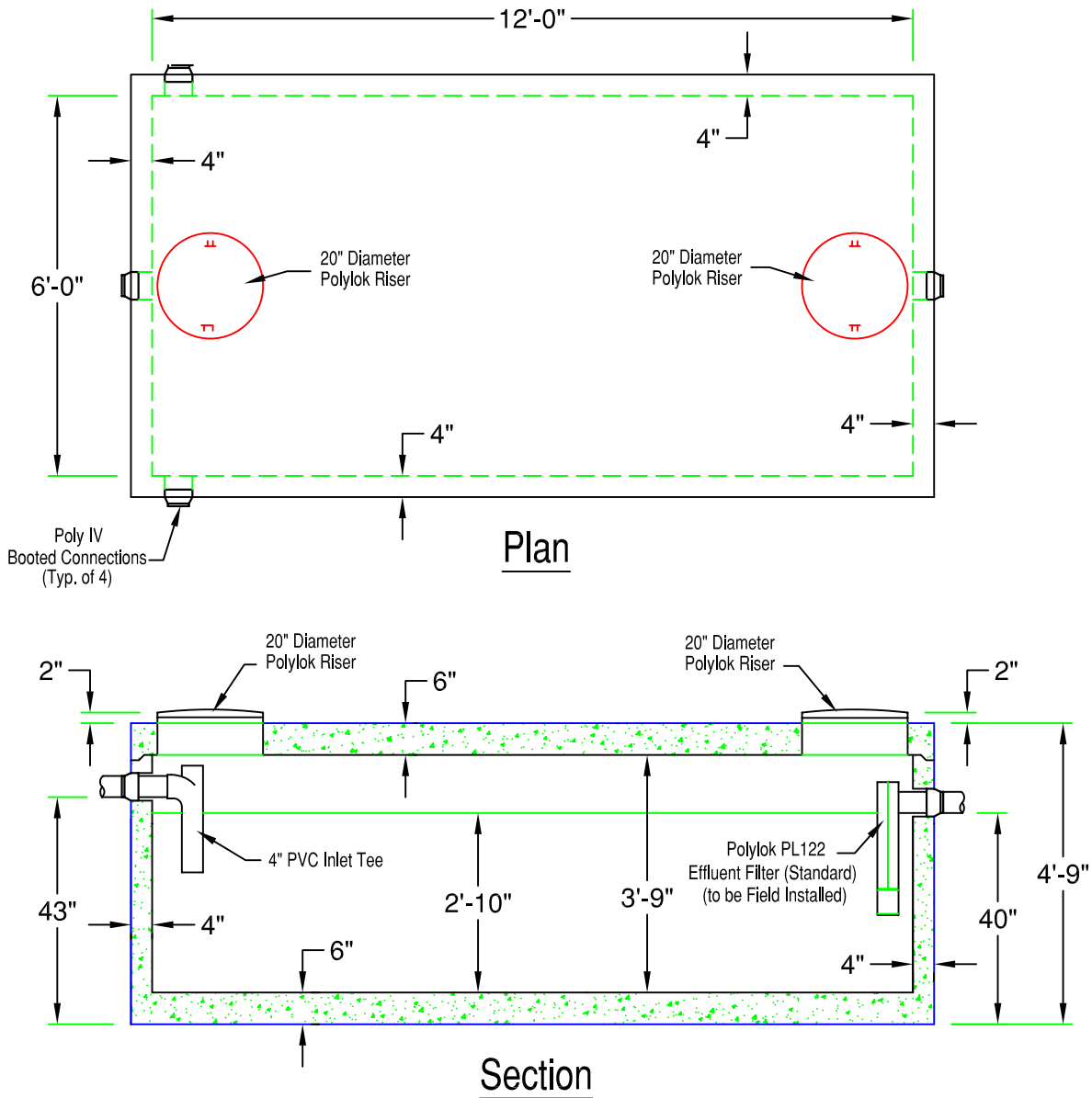


# 1500 Gallon Low Septic Tank

## Water-Proof (1500STLLW)

Total Weight : 24,420 lbs



### SPECIFICATIONS:

- Concrete Minimum Strength 5000psi @ 28 days
- Steel Reinforcement Grade 60
- Joints Sealed with Butyl Sealant
- Inlet and Outlet Baffles by Others
- Top Seam Construction
- Water Tight to Outlet Level
- Superior Performance Orenco Effluent Filters Available
- Effluent Filter Alarm Available
- Weights Subject to Variation



**PRECAST CONCRETE PRODUCTS**  
 78 PRECAST ROAD MILTON, VT 05468 +802.893.2401  
 TOLL FREE 1.888.299.2401 FAX 802.893.1542