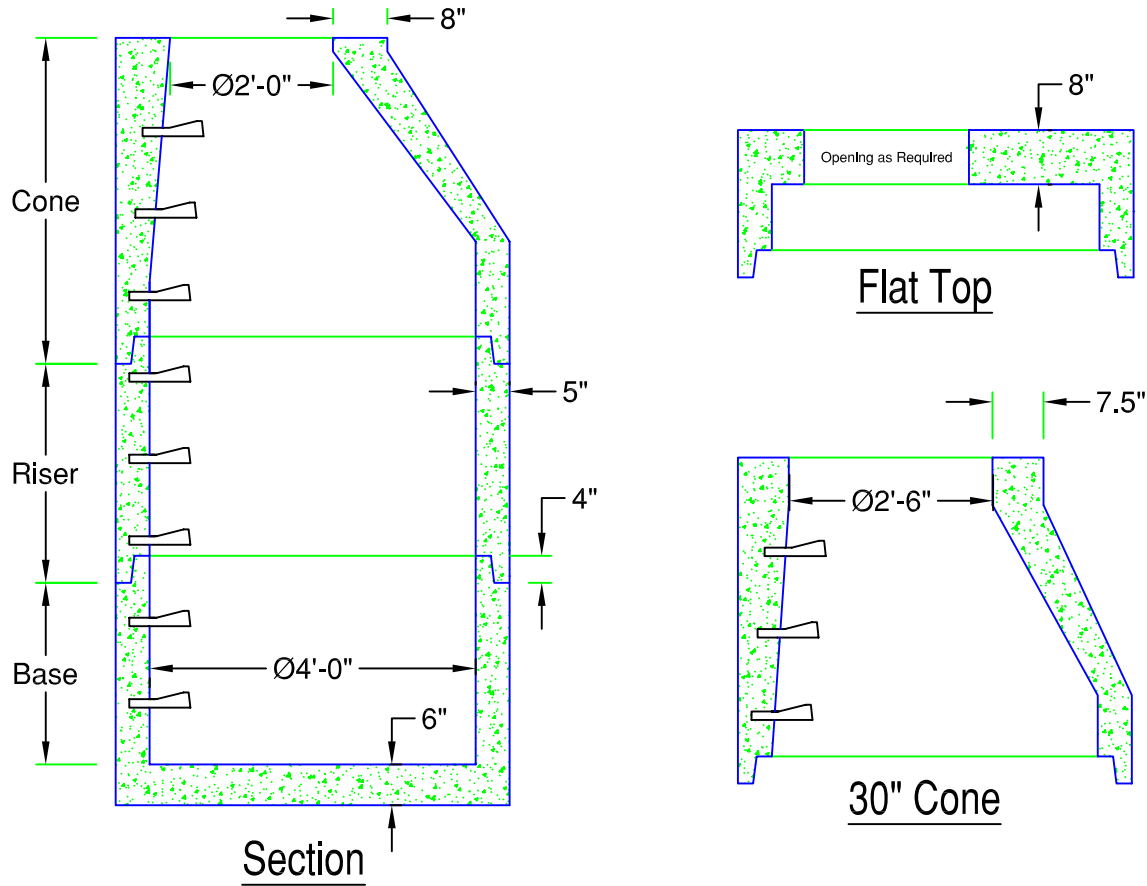


48" Diameter Manhole

94 Gal. / Vertical ft.



FLAT TOP SECTION

Height	Item #	Weight
1'-0"	MH48-12FT	1,650 lb
1'-6"	MH48-18FT	2,080 lb

Standard Heights Shown - Other Heights Available

RISER SECTION

Height	Item #	Weight
1'-0"	MH48-12R	860 lb
2'-0"	MH48-24R	1,710 lb
3'-0"	MH48-36R	2,570 lb
4'-0"	MH48-48R	3,420 lb

Standard Heights Shown - Other Heights Available

BASE SECTION

Height	Item #	Weight
2'-0"	MH48-24B	3,070 lb
3'-0"	MH48-36B	3,880 lb
4'-0"	MH48-48B	4,720 lb
5'-0"	MH48-60B	5,560 lb
6'-0"	MH48-72B	6,400 lb

Standard Heights Shown - Other Heights Available

24" Cone

Height	Item #	Weight
3'-0"	MH48-24C36	2,680 lb
3'-6"	MH48-24C42	3,120 lb

30" Cone

Height	Item #	Weight
3'-0"	MH48-30C36	2,660 lb

SPECIFICATIONS:

- Concrete Minimum Strength 5000psi @ 28 days
- Joints sealed with Butyl sealant
- Monolithic Construction
- Meets ASTM C478
- H-20 Loading
- Weights Subject to Variation



PRECAST CONCRETE PRODUCTS

78 PRECAST ROAD MILTON, VT 05468 •802.893.2401
TOLL FREE 1.888.299.2401 FAX 802.893.1542