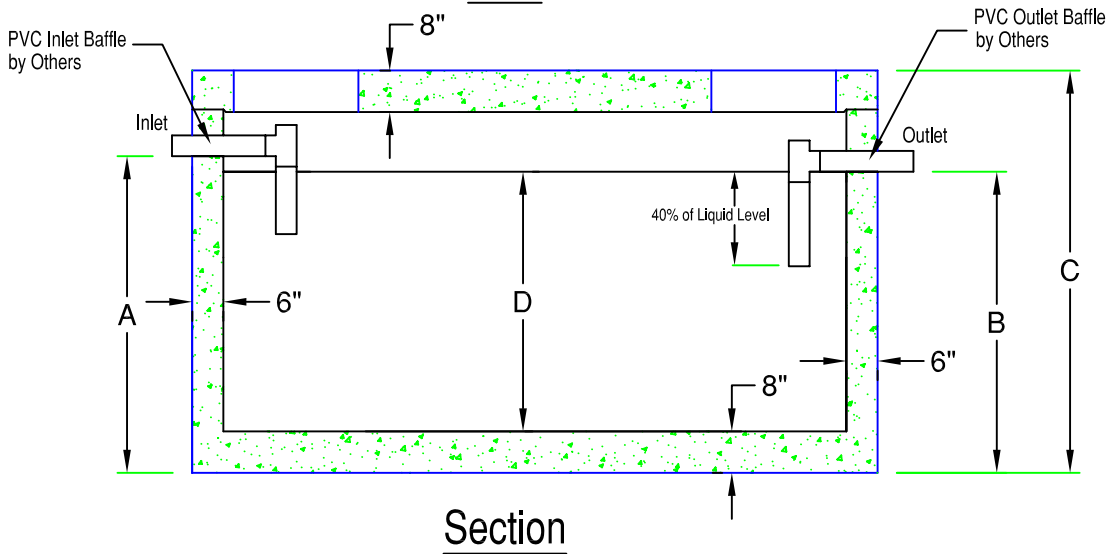
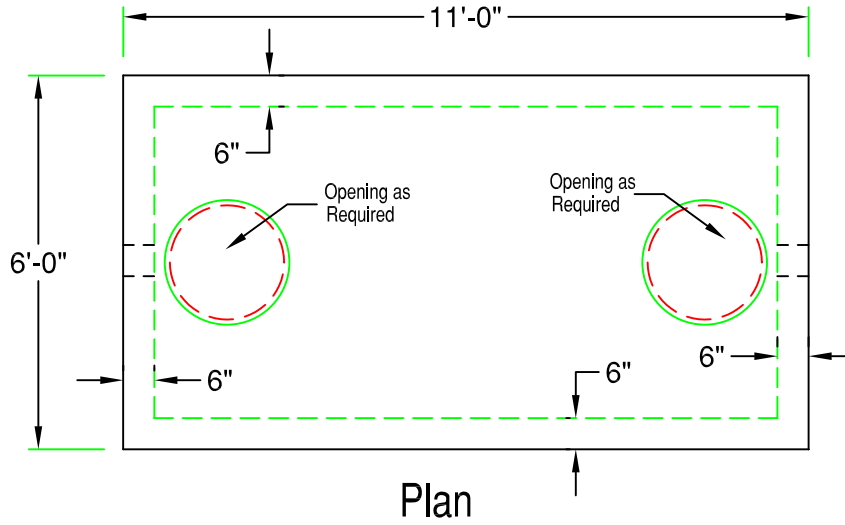


# 5' x 10' Heavy Duty Septic Tank

## 1,000 - 3,500 Gallon (HD5-10)

374 Gal. / Vertical ft.



	Model	Tank Capacity	Inlet (A)	Outlet (B)	Height (C)	Liquid (D)	Weight
*	HD5-10-1000	1000 gallon	47"	44"	64"	33"	22,520 lb
*	HD5-10-1250	1250 gallon	52"	49"	70"	41"	23,710 lb
*	HD5-10-1500	1500 gallon	60"	57"	76"	49"	24,890 lb
	HD5-10-2000	2000 gallon	75"	72"	94"	64"	28,420 lb
	HD5-10-2500	2500 gallon	91"	88"	112"	80"	31,970 lb
	HD5-10-3000	3000 gallon	107"	104"	124"	96"	34,340 lb
	HD5-10-3500	3500 gallon	123"	120"	140"	112"	37,490 lb

### SPECIFICATIONS:

- Concrete Minimum Strength 5000psi @ 28 days
- Steel Reinforcement Grade 60
- Joints Sealed with Butyl Sealant
- Inlet and Outlet Baffles by Others
- H2O Loading Available
- (\*) Top Seam Construction
- Weights Subject to Variation



**PRECAST CONCRETE PRODUCTS**  
 78 PRECAST ROAD MILTON, VT 05468 •802.893.2401  
 TOLL FREE 1.888.299.2401 FAX 802.893.1542