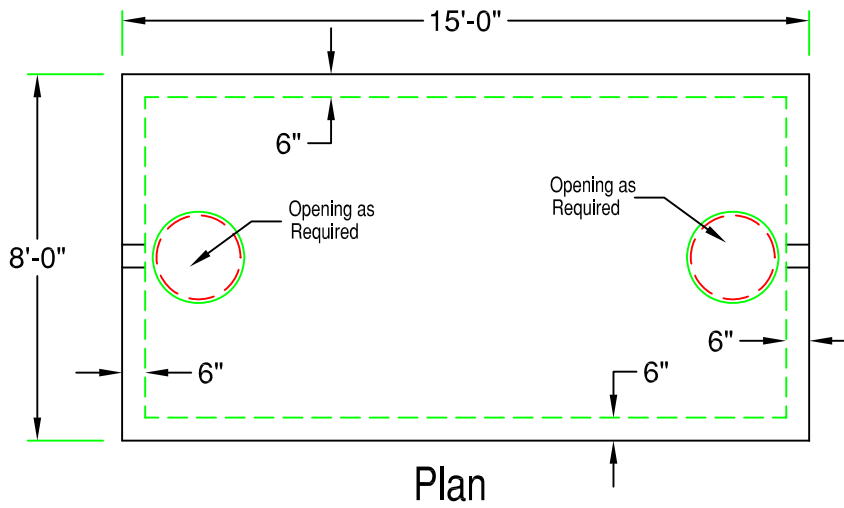


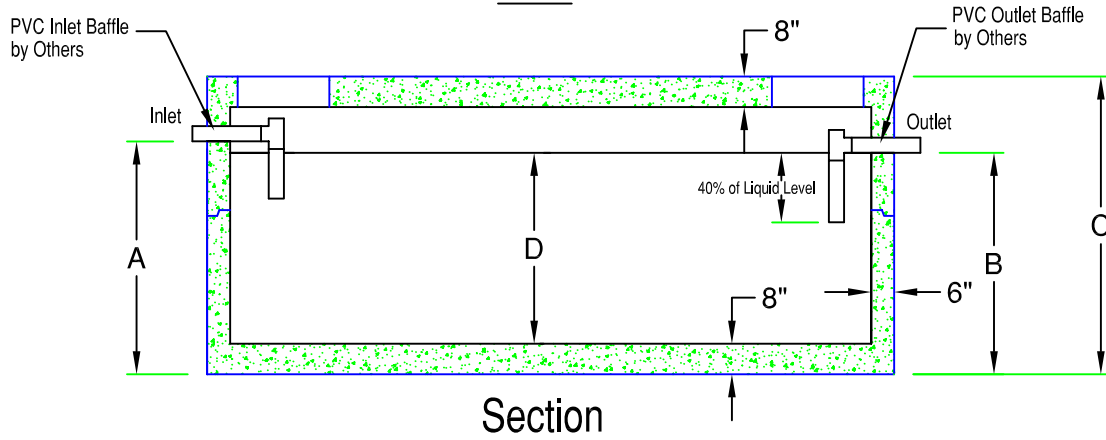
7' x 14' Heavy Duty Septic Tank

3,000 - 8,000 Gallon (HD7-14)

733 Gal. / Vertical ft.



Note:
Struts for Structural Integrity may be Required on Larger Sizes



Model	Tank Capacity	Inlet (A)	Outlet (B)	Height (C)	Liquid (D)	Weight
HD7-14-3000	3000 gallon	60"	57"	76"	50"	41,600 lb
HD7-14-3500	3500 gallon	69"	66"	88"	58"	43,280 lb
HD7-14-4000	4000 gallon	77"	74"	94"	66"	44,880 lb
HD7-14-4500	4500 gallon	85"	82"	100"	74"	46,520 lb
HD7-14-5000	5000 gallon	93"	90"	112"	82"	49,760 lb
HD7-14-5500	5500 gallon	101"	98"	118"	90"	51,400 lb
HD7-14-6000	6000 gallon	109"	106"	124"	98"	53,040 lb
HD7-14-6500	6500 gallon	117"	114"	136"	106"	56,280 lb
HD7-14-7000	7000 gallon	126"	123"	142"	115"	57,920 lb
HD7-14-7500	7500 gallon	134"	131"	148"	123"	61,200 lb
HD7-14-8000	8000 gallon	142"	139"	152"	131"	62,840 lb

SPECIFICATIONS:

- Concrete Minimum Strength 5000psi @ 28 days
- Steel Reinforcement Grade 60
- Joints Sealed with Butyl Sealant
- Inlet and Outlet Baffles by Others
- H-20 Loading Available
- Weights Subject to Variation



PRECAST CONCRETE PRODUCTS
78 PRECAST ROAD MILTON, VT 05468 •802.893.2401
TOLL FREE 1.888.299.2401 FAX 802.893.1542