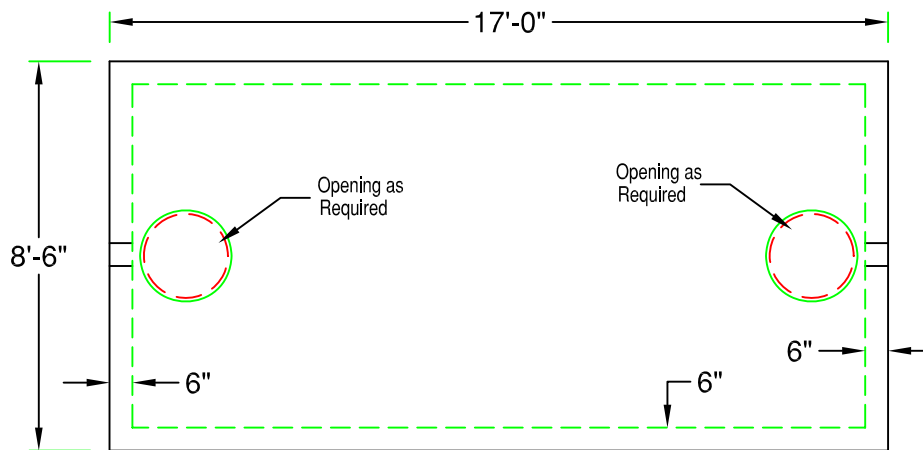


# 7.5' x 16' Heavy Duty Septic Tank

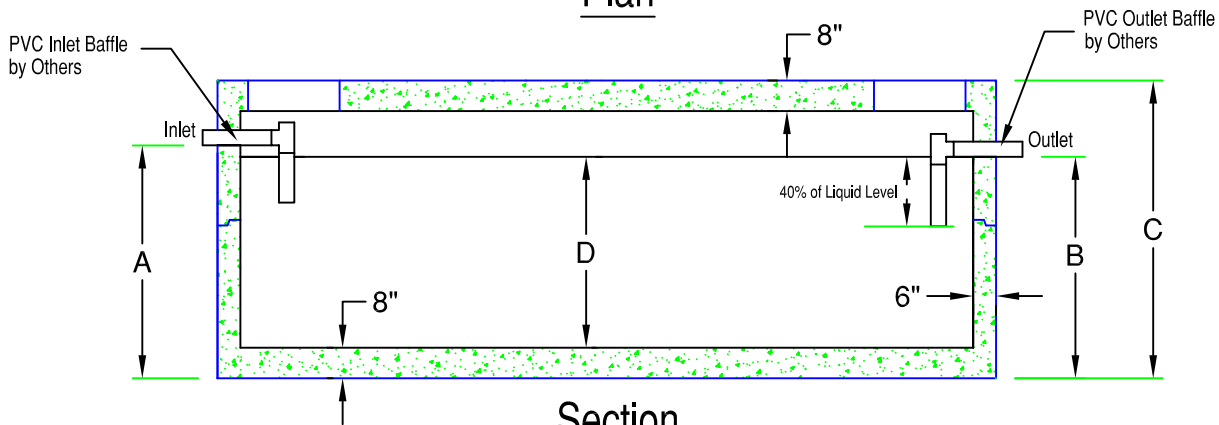
4,000 - 10,000 Gallon (HD7.5-16)

898 Gal. / Vertical ft.



**Note:**  
Struts for Structural Integrity may be Required on Larger Sizes

Plan



Section

Model	Tank Capacity	Inlet (A)	Outlet (B)	Height (C)	Liquid (D)	Weight
HD7.5-16-4000	4000 gallon	65"	62"	82"	54"	46,700 lb
HD7.5-16-4500	4500 gallon	72"	69"	88"	61"	48,700 lb
HD7.5-16-5000	5000 gallon	78"	75"	94"	67"	50,500 lb
HD7.5-16-5500	5500 gallon	85"	82"	100"	74"	52,500 lb
HD7.5-16-6000	6000 gallon	92"	89"	106"	81"	54,600 lb
HD7.5-16-6500	6500 gallon	98"	95"	118"	87"	56,400 lb
HD7.5-16-7000	7000 gallon	105"	102"	124"	94"	58,500 lb
HD7.5-16-7500	7500 gallon	112"	109"	130"	101"	60,600 lb
HD7.5-16-8000	8000 gallon	118"	115"	136"	107"	62,400 lb
HD7.5-16-8500	8500 gallon	125"	122"	142"	114"	64,400 lb
HD7.5-16-9000	9000 gallon	132"	129"	148"	121"	66,500 lb
HD7.5-16-9500	9500 gallon	138"	135"	154"	127"	68,300 lb
HD7.5-16-10000	10000 gallon	145"	142"	160"	134"	70,300 lb

**SPECIFICATIONS:**

- Concrete Minimum Strength 5000psi @ 28 days
- Steel Reinforcement Grade 60
- Joints Sealed with Butyl Sealant
- Inlet and Outlet Baffles by Others
- H-20 Loading Available
- Weights Subject to Variation



**PRECAST CONCRETE PRODUCTS**

78 PRECAST ROAD MILTON, VT 05468 •802.893.2401  
TOLL FREE 1.888.299.2401 FAX 802.893.1542